



# PORTO VIEW

RASHID YACHTS & MARINA

FLOOR PLAN

EMAAR

# PORTO VIEW

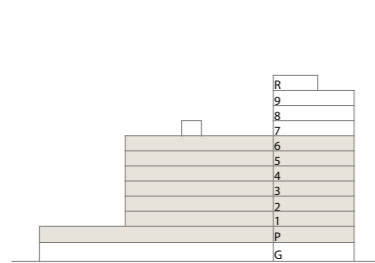
RASHID YACHTS & MARINA

## 1 BEDROOM

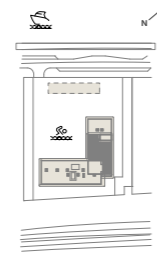
TYPE A.1  
UNITS P06, 109, 209-609

SUITE AREA	727.64-728.18 SQ.FT	67.6-67.65 SQ.M
BALCONY AREA	73.95 SQ.FT	6.87 SQ.M
TOTAL AREA	801.59-802.13 SQ.FT	74.47-74.52 SQ.M

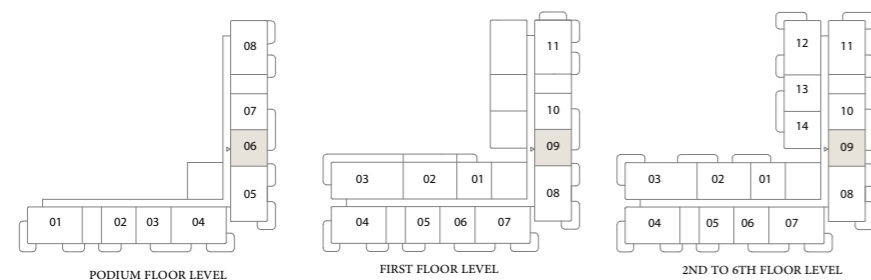
### KEY SECTION



### LAYOUT



### KEY PLAN



FLOOR PLAN 1. All dimensions are in imperial and metric, and measured from finish to finish excluding construction tolerances. 2. All materials, dimensions, and drawings are approximate only. 3. Information is subject to change without notice, at developer's absolute discretion. 4. Actual area may vary from the stated area. 5. Drawings not to scale. 6. All images used are for illustrative purposes only and do not represent the actual size, features, specifications, fittings, and furnishings. 7. The developer reserves the right to make revisions / alterations, at its absolute discretion, without any liability whatsoever.

# PORTO VIEW

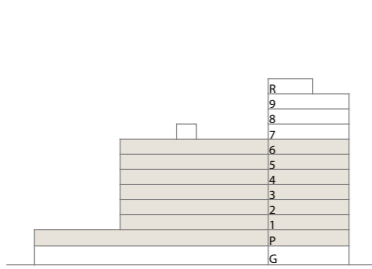
RASHID YACHTS & MARINA

## 1 BEDROOM

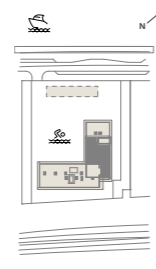
TYPE A.2  
UNITS P07, 110, 210-610

SUITE AREA	733.02-736.57 SQ.FT	68.10-68.43 SQ.M
BALCONY AREA	73.95 SQ.FT	6.87 SQ.M
TOTAL AREA	806.97-810.52 SQ.FT	74.97-75.30 SQ.M

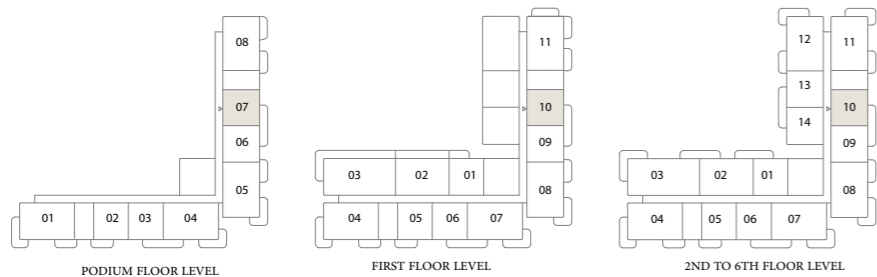
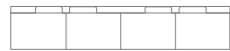
### KEY SECTION



### LAYOUT



### KEY PLAN



FLOOR PLAN 1. All dimensions are in imperial and metric, and measured from finish to finish excluding construction tolerances. 2. All materials, dimensions, and drawings are approximate only. 3. Information is subject to change without notice, at developer's absolute discretion. 4. Actual area may vary from the stated area. 5. Drawings not to scale. 6. All images used are for illustrative purposes only and do not represent the actual size, features, specifications, fittings, and furnishings. 7. The developer reserves the right to make revisions / alterations, at its absolute discretion, without any liability whatsoever.

# PORTO VIEW

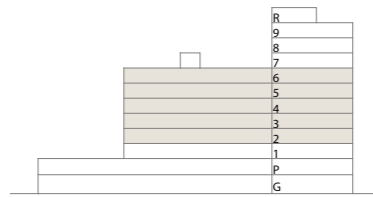
RASHID YACHTS & MARINA

## 1 BEDROOM

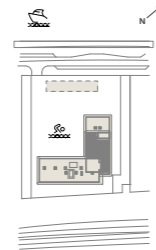
TYPE A.3  
UNITS 213-613

SUITE AREA	729.69 SQ.FT	67.79 SQ.M
BALCONY AREA	73.95 SQ.FT	6.87 SQ.M
TOTAL AREA	803.63 SQ.FT	74.66 SQ.M

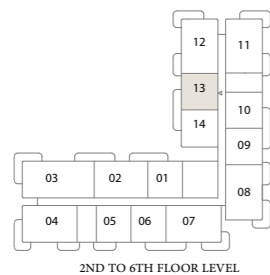
KEY SECTION



LAYOUT



KEY PLAN



2ND TO 6TH FLOOR LEVEL



FLOOR PLAN 1. All dimensions are in imperial and metric, and measured from finish to finish excluding construction tolerances. 2. All materials, dimensions, and drawings are approximate only. 3. Information is subject to change without notice, at developer's absolute discretion. 4. Actual area may vary from the stated area. 5. Drawings not to scale. 6. All images used are for illustrative purposes only and do not represent the actual size, features, specifications, fittings, and furnishings. 7. The developer reserves the right to make revisions / alterations, at its absolute discretion, without any liability whatsoever.

# PORTO VIEW

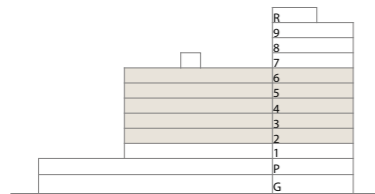
RASHID YACHTS & MARINA

## 1 BEDROOM

TYPE A.4  
UNITS 214-614

SUITE AREA	728.18 SQ.FT	67.65 SQ.M
BALCONY AREA	73.95 SQ.FT	6.87 SQ.M
TOTAL AREA	802.13 SQ.FT	74.52 SQ.M

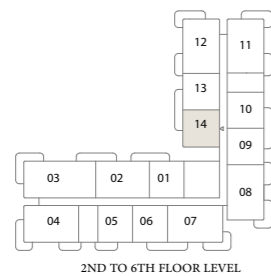
KEY SECTION



LAYOUT



KEY PLAN



2ND TO 6TH FLOOR LEVEL



FLOOR PLAN 1. All dimensions are in imperial and metric, and measured from finish to finish excluding construction tolerances. 2. All materials, dimensions, and drawings are approximate only. 3. Information is subject to change without notice, at developer's absolute discretion. 4. Actual area may vary from the stated area. 5. Drawings not to scale. 6. All images used are for illustrative purposes only and do not represent the actual size, features, specifications, fittings, and furnishings. 7. The developer reserves the right to make revisions / alterations, at it's absolute discretion, without any liability whatsoever.

# PORTO VIEW

RASHID YACHTS & MARINA

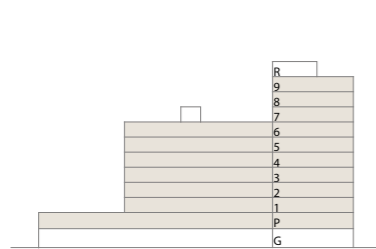
## 1 BEDROOM

TYPE B.1

UNITS P02, 105, 205-605, 705, 805-905

SUITE AREA	706.97-707.08 SQ.FT	65.68-65.69 SQ.M
BALCONY AREA	72.76 SQ.FT	6.76 SQ.M
TOTAL AREA	779.74-779.85 SQ.FT	72.44-72.45 SQ.M

### KEY SECTION



### LAYOUT



### KEY PLAN



FLOOR PLAN 1. All dimensions are in imperial and metric, and measured from finish to finish excluding construction tolerances. 2. All materials, dimensions, and drawings are approximate only. 3. Information is subject to change without notice, at developer's absolute discretion. 4. Actual area may vary from the stated area. 5. Drawings not to scale. 6. All images used are for illustrative purposes only and do not represent the actual size, features, specifications, fittings, and furnishings. 7. The developer reserves the right to make revisions / alterations, at it's absolute discretion, without any liability whatsoever.

# PORTO VIEW

RASHID YACHTS & MARINA

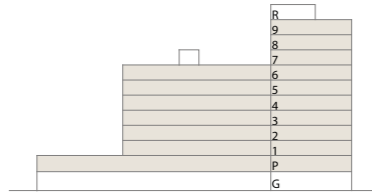
## 1 BEDROOM

TYPE B.2

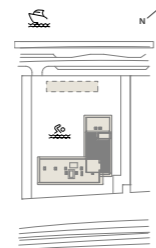
UNITS P03, 106, 206-606, 706, 806-906

SUITE AREA	698.9 SQ.FT	64.93 SQ.M
BALCONY AREA	74.81 SQ.FT	6.95 SQ.M
TOTAL AREA	773.71 SQ.FT	71.88 SQ.M

### KEY SECTION



### LAYOUT



### KEY PLAN



FLOOR PLAN 1. All dimensions are in imperial and metric, and measured from finish to finish excluding construction tolerances. 2. All materials, dimensions, and drawings are approximate only. 3. Information is subject to change without notice, at developer's absolute discretion. 4. Actual area may vary from the stated area. 5. Drawings not to scale. 6. All images used are for illustrative purposes only and do not represent the actual size, features, specifications, fittings, and furnishings. 7. The developer reserves the right to make revisions / alterations, at it's absolute discretion, without any liability whatsoever.

# PORTO VIEW

RASHID YACHTS & MARINA

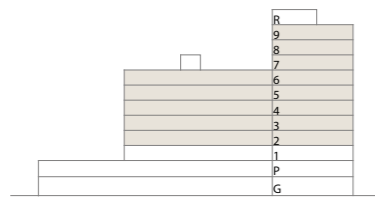
## 1 BEDROOM

TYPE B.5

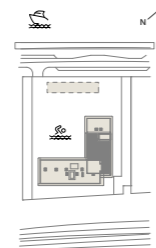
UNITS 201-601, 701, 801-901

SUITE AREA	707.73 SQ.FT	65.75 SQ.M
BALCONY AREA	72.23 SQ.FT	6.71 SQ.M
TOTAL AREA	779.95 SQ.FT	72.46 SQ.M

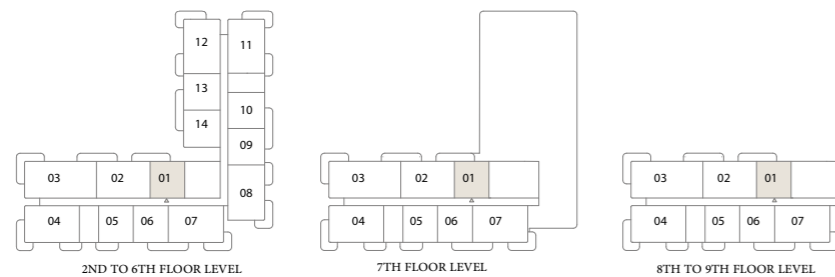
KEY SECTION



LAYOUT



KEY PLAN



FLOOR PLAN 1. All dimensions are in imperial and metric, and measured from finish to finish excluding construction tolerances. 2. All materials, dimensions, and drawings are approximate only. 3. Information is subject to change without notice, at developer's absolute discretion. 4. Actual area may vary from the stated area. 5. Drawings not to scale. 6. All images used are for illustrative purposes only and do not represent the actual size, features, specifications, fittings, and furnishings. 7. The developer reserves the right to make revisions / alterations, at its absolute discretion, without any liability whatsoever.

# PORTO VIEW

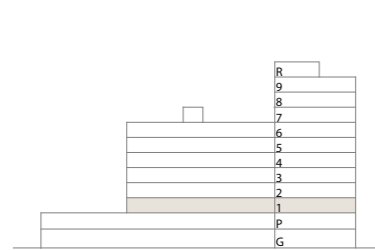
RASHID YACHTS & MARINA

## 1 BEDROOM

TYPE B.6  
UNIT 101

SUITE AREA	707.83 SQ.FT	65.76 SQ.M
BALCONY AREA	92.35 SQ.FT	8.58 SQ.M
TOTAL AREA	800.19 SQ.FT	74.34 SQ.M

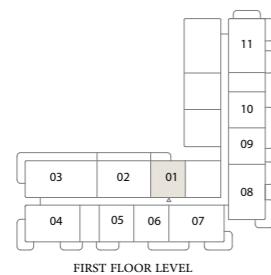
KEY SECTION



LAYOUT



KEY PLAN



FIRST FLOOR LEVEL



FLOOR PLAN 1. All dimensions are in imperial and metric, and measured from finish to finish excluding construction tolerances. 2. All materials, dimensions, and drawings are approximate only. 3. Information is subject to change without notice, at developer's absolute discretion. 4. Actual area may vary from the stated area. 5. Drawings not to scale. 6. All images used are for illustrative purposes only and do not represent the actual size, features, specifications, fittings, and furnishings. 7. The developer reserves the right to make revisions / alterations, at it's absolute discretion, without any liability whatsoever.

# PORTO VIEW

RASHID YACHTS & MARINA

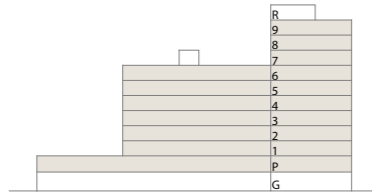
## 2 BEDROOM

TYPE A.4

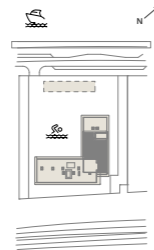
UNITS P01, 104, 204-604, 704, 804-904

SUITE AREA	1090.71-1090.81 SQ.FT	101.33-101.34 SQ.M
BALCONY AREA	201.5 SQ.FT	18.72 SQ.M
TOTAL AREA	1292.21-1292.32 SQ.FT	120.05-120.06 SQ.M

### KEY SECTION



### LAYOUT



### KEY PLAN



FLOOR PLAN 1. All dimensions are in imperial and metric, and measured from finish to finish excluding construction tolerances. 2. All materials, dimensions, and drawings are approximate only. 3. Information is subject to change without notice, at developer's absolute discretion. 4. Actual area may vary from the stated area. 5. Drawings not to scale. 6. All images used are for illustrative purposes only and do not represent the actual size, features, specifications, fittings, and furnishings. 7. The developer reserves the right to make revisions / alterations, at it's absolute discretion, without any liability whatsoever.

# PORTO VIEW

RASHID YACHTS & MARINA

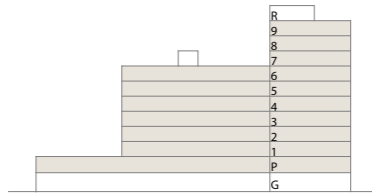
## 2 BEDROOM

TYPE A.5

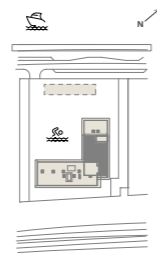
UNITS P04, 107, 207-607, 707, 807-907

SUITE AREA	1085.54 SQ.FT	100.85 SQ.M
BALCONY AREA	199.24 SQ.FT	18.51 SQ.M
TOTAL AREA	1284.78 SQ.FT	119.36 SQ.M

### KEY SECTION



### LAYOUT



### KEY PLAN



FLOOR PLAN 1. All dimensions are in imperial and metric, and measured from finish to finish excluding construction tolerances. 2. All materials, dimensions, and drawings are approximate only. 3. Information is subject to change without notice, at developer's absolute discretion. 4. Actual area may vary from the stated area. 5. Drawings not to scale. 6. All images used are for illustrative purposes only and do not represent the actual size, features, specifications, fittings, and furnishings. 7. The developer reserves the right to make revisions / alterations, at it's absolute discretion, without any liability whatsoever.

# PORTO VIEW

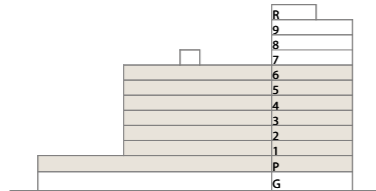
RASHID YACHTS & MARINA

## 2 BEDROOM

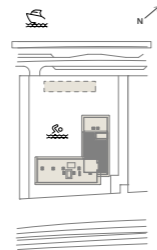
TYPE A.6  
UNITS P05, 108, 208-608

SUITE AREA	1085.43-1085.54 SQ.FT	100.84-100.85 SQ.M
BALCONY AREA	197.95 SQ.FT	18.39 SQ.M
TOTAL AREA	1283.38-1283.49 SQ.FT	119.23-119.24 SQ.M

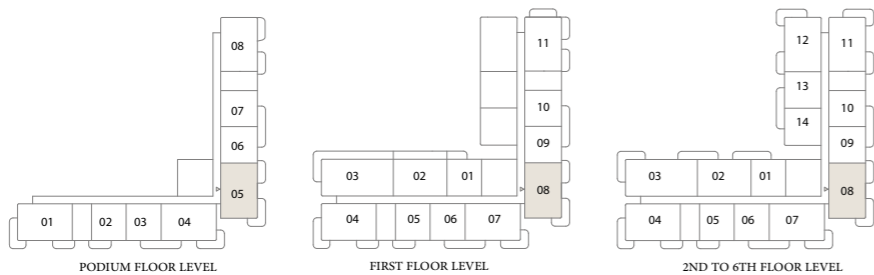
### KEY SECTION



### LAYOUT



### KEY PLAN



FLOOR PLAN 1. All dimensions are in imperial and metric, and measured from finish to finish excluding construction tolerances. 2. All materials, dimensions, and drawings are approximate only. 3. Information is subject to change without notice, at developer's absolute discretion. 4. Actual area may vary from the stated area. 5. Drawings not to scale. 6. All images used are for illustrative purposes only and do not represent the actual size, features, specifications, fittings, and furnishings. 7. The developer reserves the right to make revisions / alterations, at it's absolute discretion, without any liability whatsoever.

# PORTO VIEW

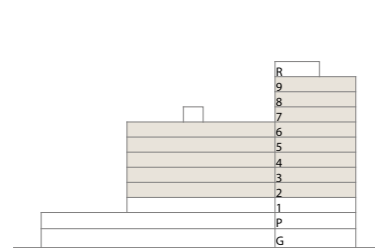
RASHID YACHTS & MARINA

## 2 BEDROOM

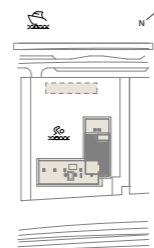
TYPE B.3  
UNITS 202-602, 702, 802-902

SUITE AREA	1075.21 SQ.FT	99.89 SQ.M
BALCONY AREA	137.46-140.04 SQ.FT	12.77-13.01 SQ.M
TOTAL AREA	1212.66-1215.25 SQ.FT	112.66-112.90 SQ.M

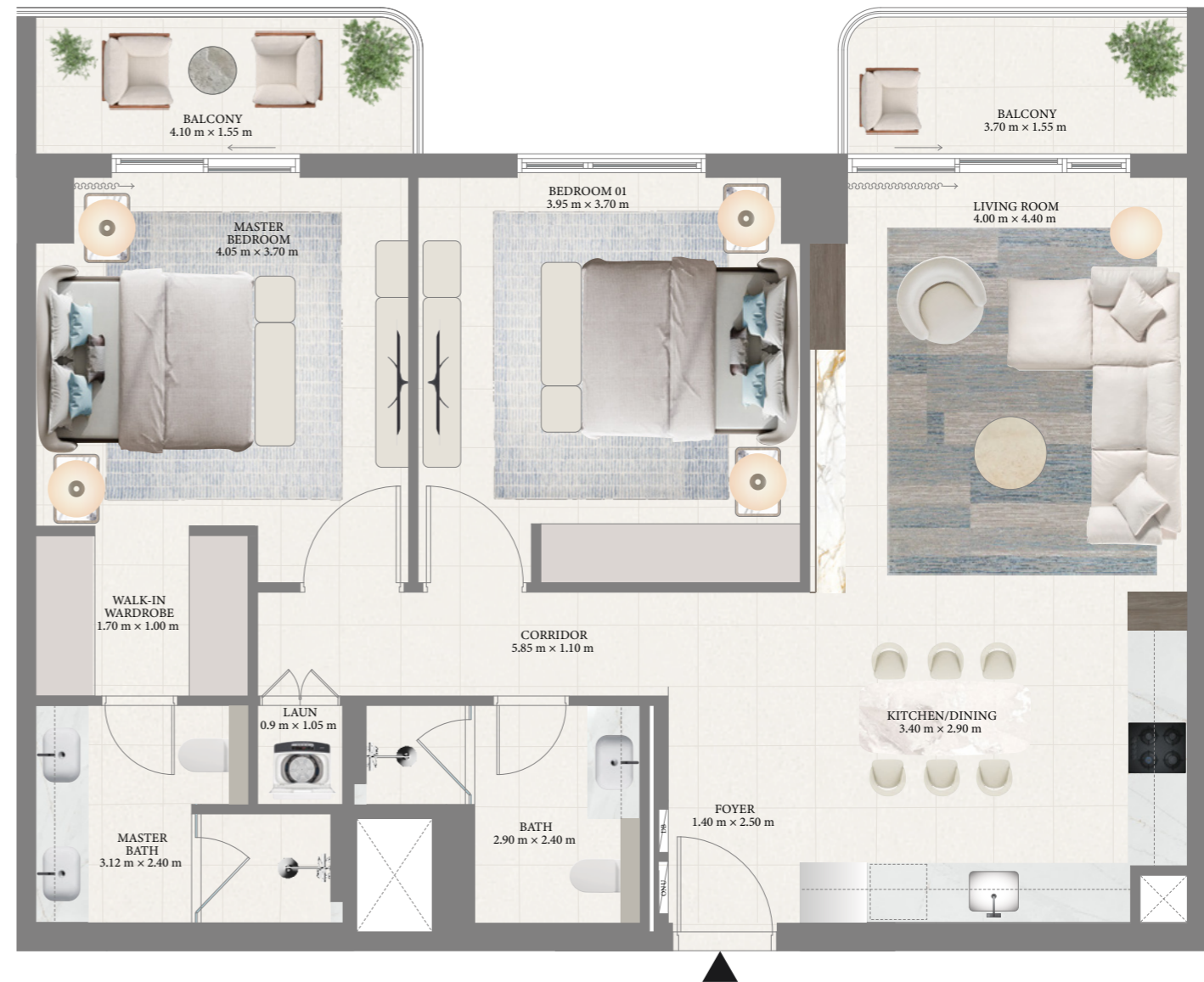
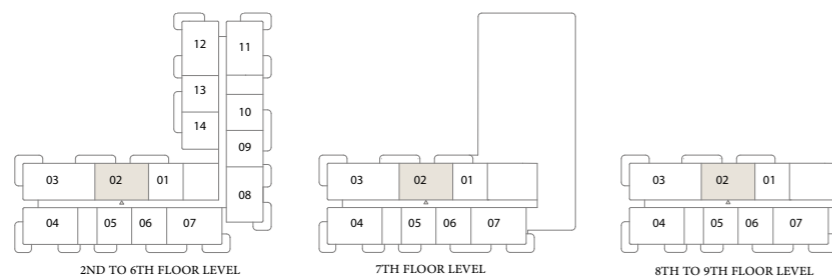
KEY SECTION



LAYOUT



KEY PLAN



FLOOR PLAN 1. All dimensions are in imperial and metric, and measured from finish to finish excluding construction tolerances. 2. All materials, dimensions, and drawings are approximate only. 3. Information is subject to change without notice, at developer's absolute discretion. 4. Actual area may vary from the stated area. 5. Drawings not to scale. 6. All images used are for illustrative purposes only and do not represent the actual size, features, specifications, fittings, and furnishings. 7. The developer reserves the right to make revisions / alterations, at it's absolute discretion, without any liability whatsoever.

# PORTO VIEW

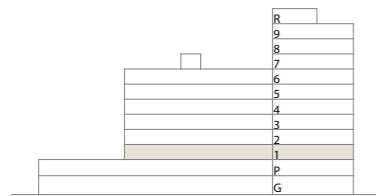
RASHID YACHTS & MARINA

## 2 BEDROOM

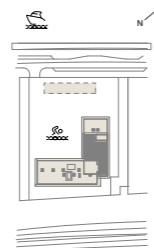
TYPE B.4  
UNIT 102

SUITE AREA	1075.21 SQ.FT	99.89 SQ.M
BALCONY AREA	276.96 SQ.FT	25.73 SQ.M
TOTAL AREA	1352.16 SQ.FT	125.62 SQ.M

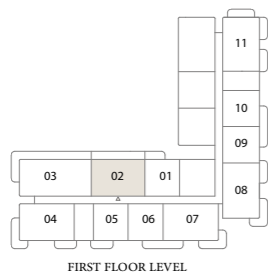
KEY SECTION



LAYOUT



KEY PLAN



FIRST FLOOR LEVEL



FLOOR PLAN 1. All dimensions are in imperial and metric, and measured from finish to finish excluding construction tolerances. 2. All materials, dimensions, and drawings are approximate only. 3. Information is subject to change without notice, at developer's absolute discretion. 4. Actual area may vary from the stated area. 5. Drawings not to scale. 6. All images used are for illustrative purposes only and do not represent the actual size, features, specifications, fittings, and furnishings. 7. The developer reserves the right to make revisions / alterations, at it's absolute discretion, without any liability whatsoever.

# PORTO VIEW

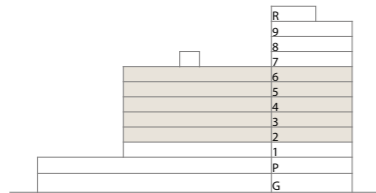
RASHID YACHTS & MARINA

## 2 BEDROOM

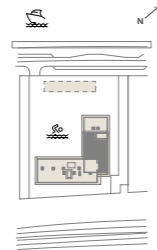
TYPE C.1  
UNITS 212-612

SUITE AREA	1077.25 SQ.FT	100.08 SQ.M
BALCONY AREA	202.36 SQ.FT	18.8 SQ.M
TOTAL AREA	1279.61 SQ.FT	118.88 SQ.M

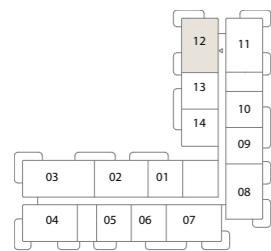
KEY SECTION



LAYOUT



KEY PLAN



2ND TO 6TH FLOOR LEVEL



FLOOR PLAN 1. All dimensions are in imperial and metric, and measured from finish to finish excluding construction tolerances. 2. All materials, dimensions, and drawings are approximate only. 3. Information is subject to change without notice, at developer's absolute discretion. 4. Actual area may vary from the stated area. 5. Drawings not to scale. 6. All images used are for illustrative purposes only and do not represent the actual size, features, specifications, fittings, and furnishings. 7. The developer reserves the right to make revisions / alterations, at it's absolute discretion, without any liability whatsoever.

# PORTO VIEW

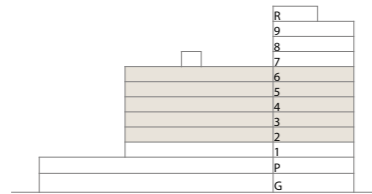
RASHID YACHTS & MARINA

## 2 BEDROOM

TYPE C.2  
UNITS 211-611

SUITE AREA	1086.08 SQ.FT	100.9 SQ.M
BALCONY AREA	202.36 SQ.FT	18.8 SQ.M
TOTAL AREA	1288.44 SQ.FT	119.7 SQ.M

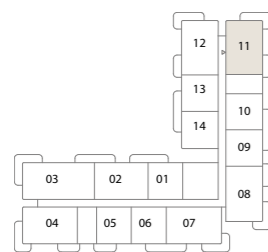
KEY SECTION



LAYOUT



KEY PLAN



2ND TO 6TH FLOOR LEVEL



FLOOR PLAN 1. All dimensions are in imperial and metric, and measured from finish to finish excluding construction tolerances. 2. All materials, dimensions, and drawings are approximate only. 3. Information is subject to change without notice, at developer's absolute discretion. 4. Actual area may vary from the stated area. 5. Drawings not to scale. 6. All images used are for illustrative purposes only and do not represent the actual size, features, specifications, fittings, and furnishings. 7. The developer reserves the right to make revisions / alterations, at it's absolute discretion, without any liability whatsoever.

# PORTO VIEW

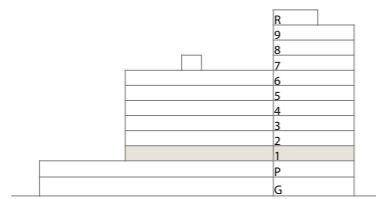
RASHID YACHTS & MARINA

## 2 BEDROOM

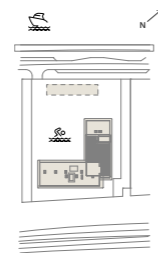
TYPE C.5  
UNIT 111

SUITE AREA	1085.97 SQ.FT	100.89 SQ.M
BALCONY AREA	286.75 SQ.FT	26.64 SQ.M
TOTAL AREA	1372.72 SQ.FT	127.53 SQ.M

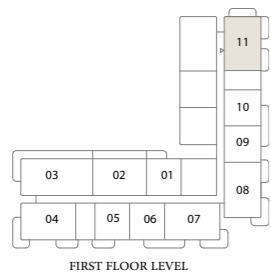
KEY SECTION



LAYOUT



KEY PLAN



FIRST FLOOR LEVEL



FLOOR PLAN 1. All dimensions are in imperial and metric, and measured from finish to finish excluding construction tolerances. 2. All materials, dimensions, and drawings are approximate only. 3. Information is subject to change without notice, at developer's absolute discretion. 4. Actual area may vary from the stated area. 5. Drawings not to scale. 6. All images used are for illustrative purposes only and do not represent the actual size, features, specifications, fittings, and furnishings. 7. The developer reserves the right to make revisions / alterations, at it's absolute discretion, without any liability whatsoever.

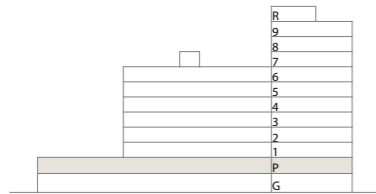
# PORTO VIEW

RASHID YACHTS & MARINA

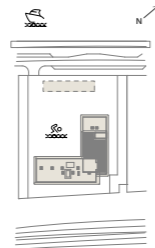
## 2 BEDROOM TYPE C.6 UNIT P08

SUITE AREA	1086.08 SQ.FT	100.9 SQ.M
BALCONY AREA	144.56 SQ.FT	13.43 SQ.M
TOTAL AREA	1230.64 SQ.FT	114.33 SQ.M

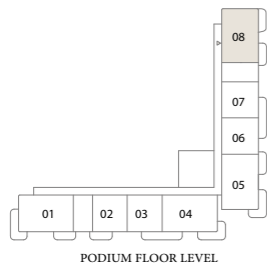
KEY SECTION



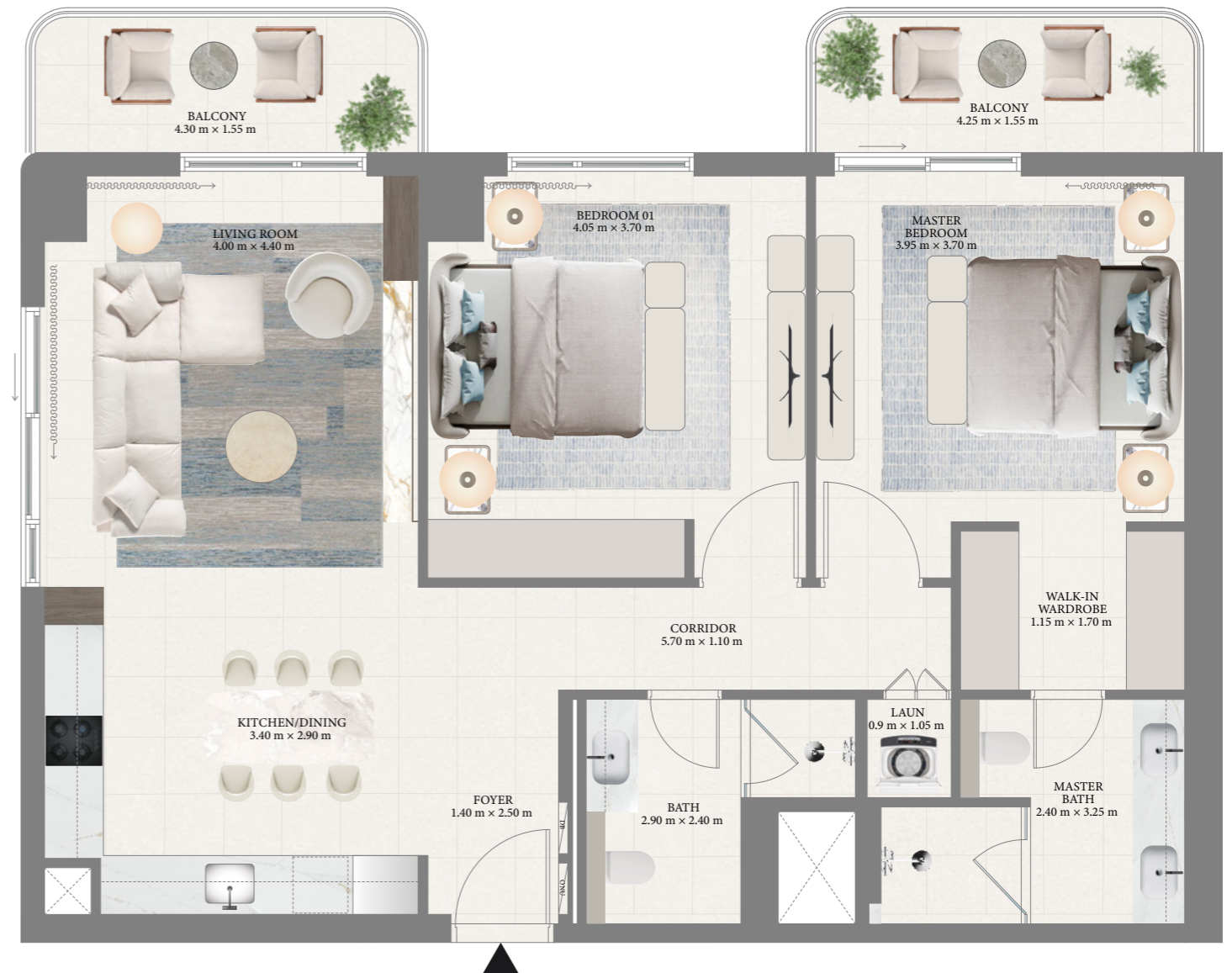
LAYOUT



KEY PLAN



PODIUM FLOOR LEVEL



FLOOR PLAN 1. All dimensions are in imperial and metric, and measured from finish to finish excluding construction tolerances. 2. All materials, dimensions, and drawings are approximate only. 3. Information is subject to change without notice, at developer's absolute discretion. 4. Actual area may vary from the stated area. 5. Drawings not to scale. 6. All images used are for illustrative purposes only and do not represent the actual size, features, specifications, fittings, and furnishings. 7. The developer reserves the right to make revisions / alterations, at it's absolute discretion, without any liability whatsoever.

# PORTO VIEW

RASHID YACHTS & MARINA

## 3 BEDROOM

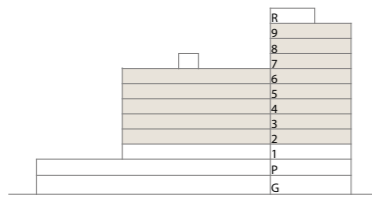
TYPE A.3  
UNITS 203-603, 703, 803-903

SUITE AREA 1423.74 SQ.FT 132.27 SQ.M

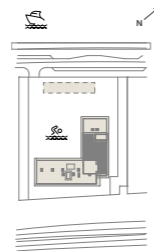
BALCONY AREA 245.63-248.22 SQ.FT 22.82-23.06 SQ.M

TOTAL AREA 1669.37-1671.96 SQ 155.09-155.33 SQ.M

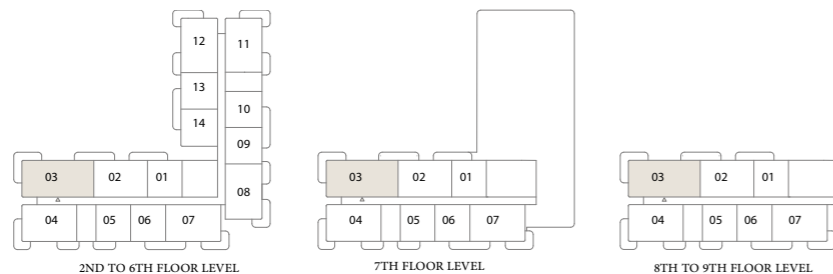
KEY SECTION



LAYOUT



KEY PLAN



FLOOR PLAN 1. All dimensions are in imperial and metric, and measured from finish to finish excluding construction tolerances. 2. All materials, dimensions, and drawings are approximate only. 3. Information is subject to change without notice, at developer's absolute discretion. 4. Actual area may vary from the stated area. 5. Drawings not to scale. 6. All images used are for illustrative purposes only and do not represent the actual size, features, specifications, fittings, and furnishings. 7. The developer reserves the right to make revisions / alterations, at it's absolute discretion, without any liability whatsoever.

# PORTO VIEW

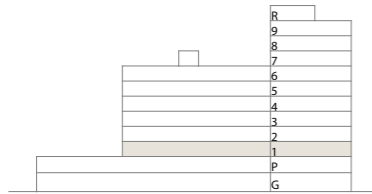
RASHID YACHTS & MARINA

## 3 BEDROOM

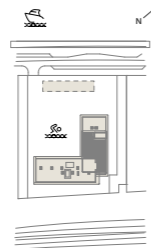
TYPE A.4  
UNIT 103

SUITE AREA	1423.74 SQ.FT	132.27 SQ.M
BALCONY AREA	483.51 SQ.FT	44.92 SQ.M
TOTAL AREA	1907.26 SQ.FT	177.19 SQ.M

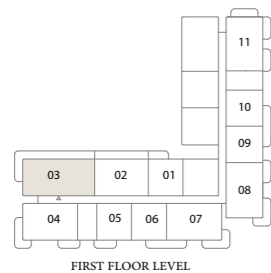
KEY SECTION



LAYOUT



KEY PLAN



FIRST FLOOR LEVEL



FLOOR PLAN 1. All dimensions are in imperial and metric, and measured from finish to finish excluding construction tolerances. 2. All materials, dimensions, and drawings are approximate only. 3. Information is subject to change without notice, at developer's absolute discretion. 4. Actual area may vary from the stated area. 5. Drawings not to scale. 6. All images used are for illustrative purposes only and do not represent the actual size, features, specifications, fittings, and furnishings. 7. The developer reserves the right to make revisions / alterations, at it's absolute discretion, without any liability whatsoever.

# PORTO VIEW

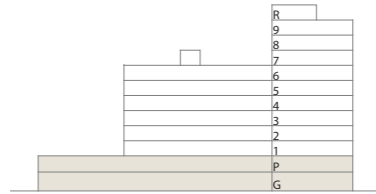
RASHID YACHTS & MARINA

## TOWNHOUSE

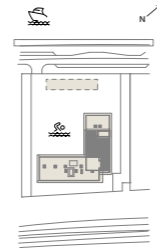
TYPE A.1  
UNITS TH01

SUITE AREA	2199.71 SQ.FT	204.36 SQ.M
BALCONY AREA	484.91 SQ.FT	45.05 SQ.M
TOTAL AREA	2684.63 SQ.FT	249.41 SQ.M

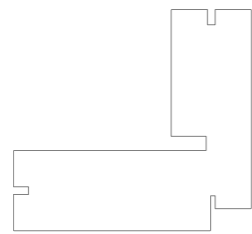
### KEY SECTION



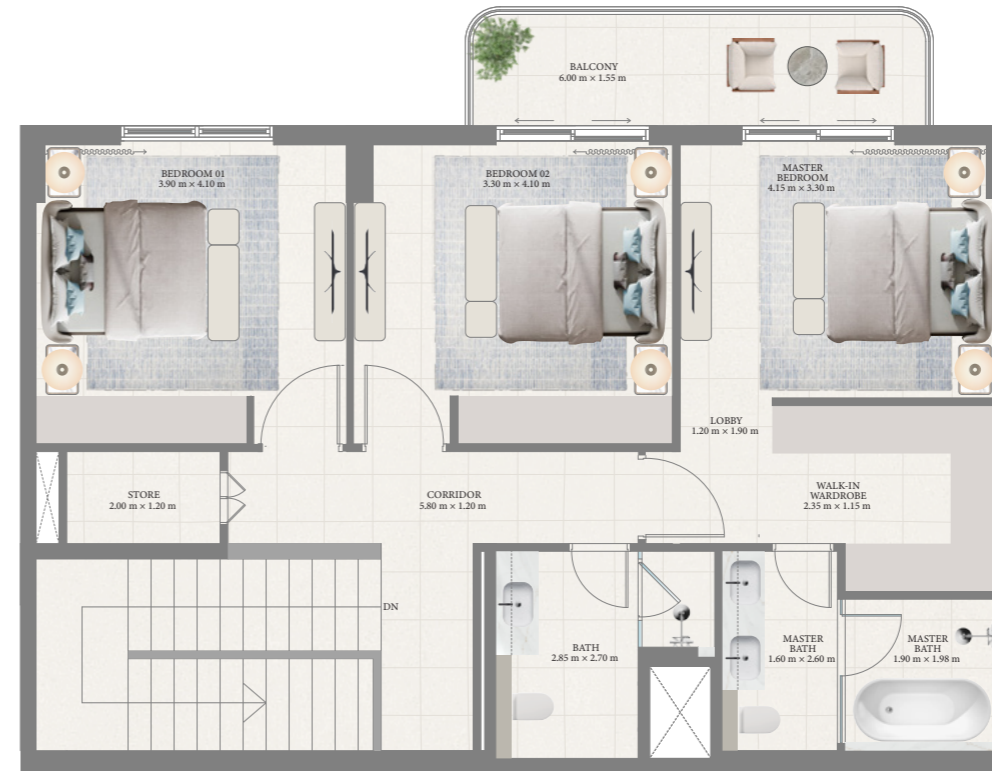
### LAYOUT



### KEY PLAN



GROUND FLOOR LEVEL



UPPER LEVEL



LOWER LEVEL

FLOOR PLAN 1. All dimensions are in imperial and metric, and measured from finish to finish excluding construction tolerances. 2. All materials, dimensions, and drawings are approximate only. 3. Information is subject to change without notice, at developer's absolute discretion. 4. Actual area may vary from the stated area. 5. Drawings not to scale. 6. All images used are for illustrative purposes only and do not represent the actual size, features, specifications, fittings, and furnishings. 7. The developer reserves the right to make revisions / alterations, at it's absolute discretion, without any liability whatsoever.

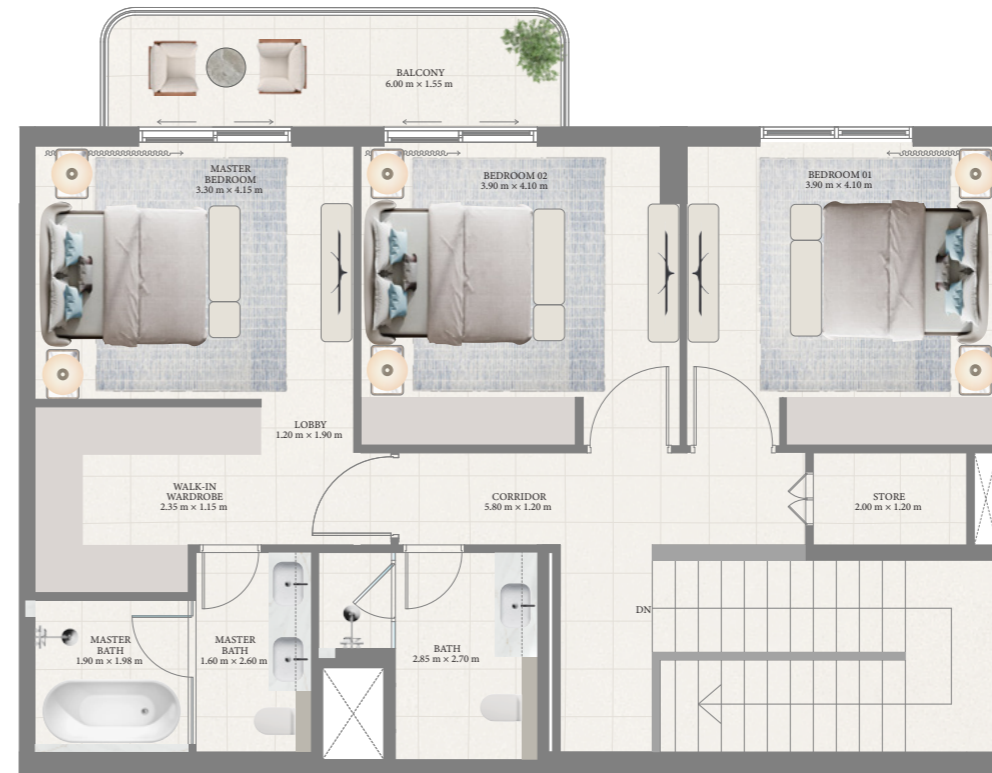
# PORTO VIEW

RASHID YACHTS & MARINA

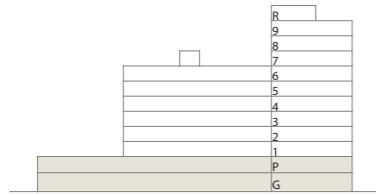
## TOWNHOUSE

TYPE A.2  
UNIT TH02

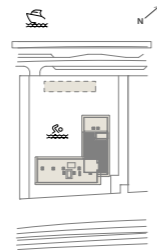
SUITE AREA	2199.82 SQ.FT	204.37 SQ.M
BALCONY AREA	517.96 SQ.FT	48.12 SQ.M
TOTAL AREA	2717.78 SQ.FT	252.49 SQ.M



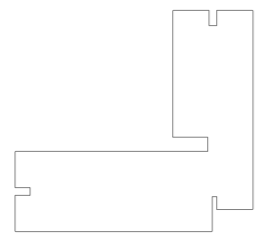
KEY SECTION



LAYOUT



KEY PLAN



GROUND FLOOR LEVEL



FLOOR PLAN 1. All dimensions are in imperial and metric, and measured from finish to finish excluding construction tolerances. 2. All materials, dimensions, and drawings are approximate only. 3. Information is subject to change without notice, at developer's absolute discretion. 4. Actual area may vary from the stated area. 5. Drawings not to scale. 6. All images used are for illustrative purposes only and do not represent the actual size, features, specifications, fittings, and furnishings. 7. The developer reserves the right to make revisions / alterations, at it's absolute discretion, without any liability whatsoever.

# PORTO VIEW

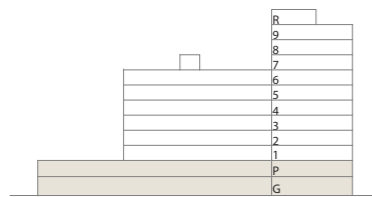
RASHID YACHTS & MARINA

## TOWNHOUSE

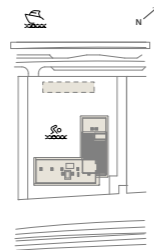
TYPE A.3  
UNIT TH03

SUITE AREA	2199.71 SQ.FT	204.36 SQ.M
BALCONY AREA	519.04 SQ.FT	48.22 SQ.M
TOTAL AREA	2718.75 SQ.FT	252.58 SQ.M

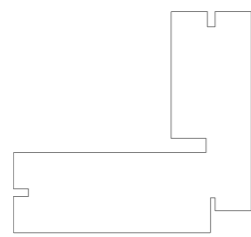
### KEY SECTION



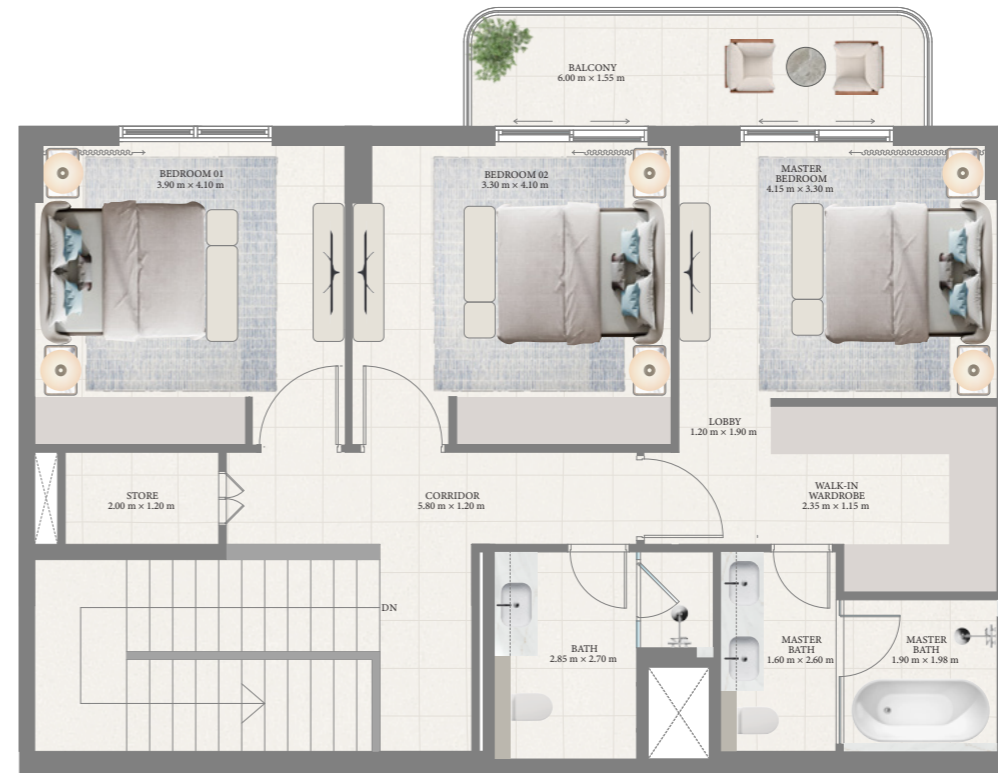
### LAYOUT



### KEY PLAN



GROUND FLOOR LEVEL



UPPER LEVEL



LOWER LEVEL

FLOOR PLAN 1. All dimensions are in imperial and metric, and measured from finish to finish excluding construction tolerances. 2. All materials, dimensions, and drawings are approximate only. 3. Information is subject to change without notice, at developer's absolute discretion. 4. Actual area may vary from the stated area. 5. Drawings not to scale. 6. All images used are for illustrative purposes only and do not represent the actual size, features, specifications, fittings, and furnishings. 7. The developer reserves the right to make revisions / alterations, at it's absolute discretion, without any liability whatsoever.

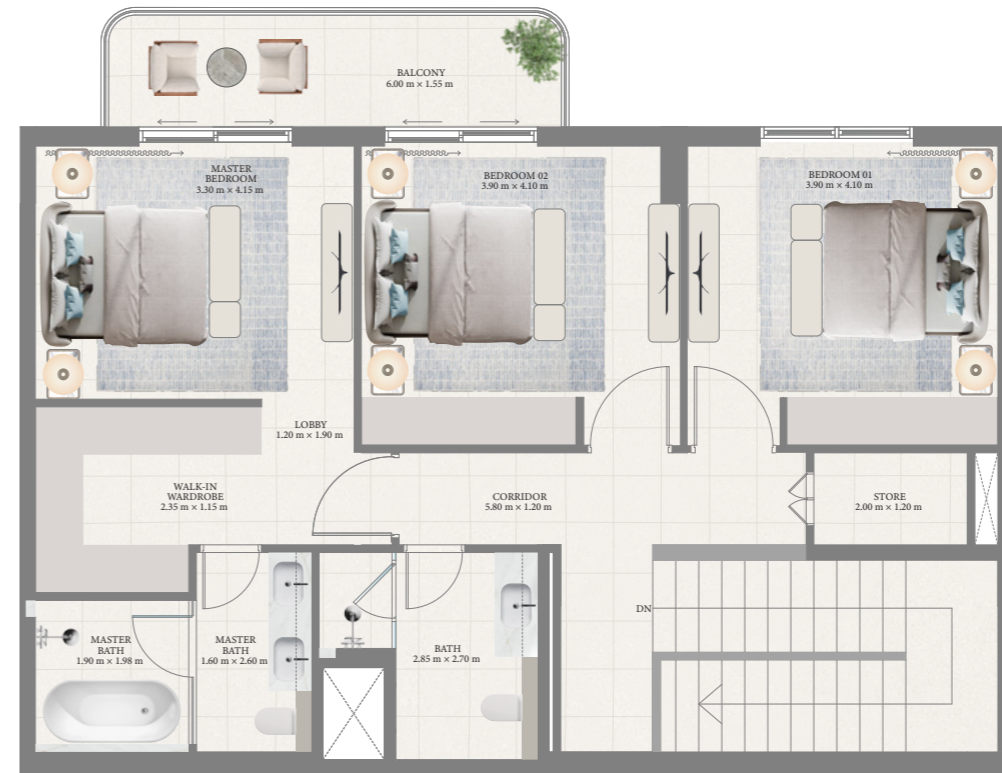
# PORTO VIEW

RASHID YACHTS & MARINA

## TOWNHOUSE

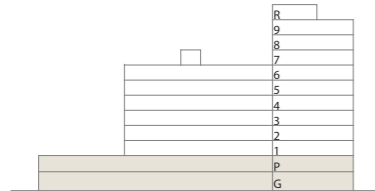
TYPE A.4  
UNIT TH04

SUITE AREA	2199.93 SQ.FT	204.38 SQ.M
BALCONY AREA	485.99 SQ.FT	45.15 SQ.M
TOTAL AREA	2685.92 SQ.FT	249.53 SQ.M

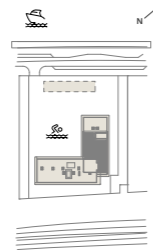


UPPER LEVEL

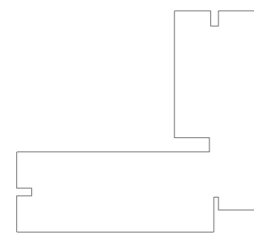
KEY SECTION



LAYOUT



KEY PLAN



GROUND FLOOR LEVEL



LOWER LEVEL

FLOOR PLAN 1. All dimensions are in imperial and metric, and measured from finish to finish excluding construction tolerances. 2. All materials, dimensions, and drawings are approximate only. 3. Information is subject to change without notice, at developer's absolute discretion. 4. Actual area may vary from the stated area. 5. Drawings not to scale. 6. All images used are for illustrative purposes only and do not represent the actual size, features, specifications, fittings, and furnishings. 7. The developer reserves the right to make revisions / alterations, at it's absolute discretion, without any liability whatsoever.